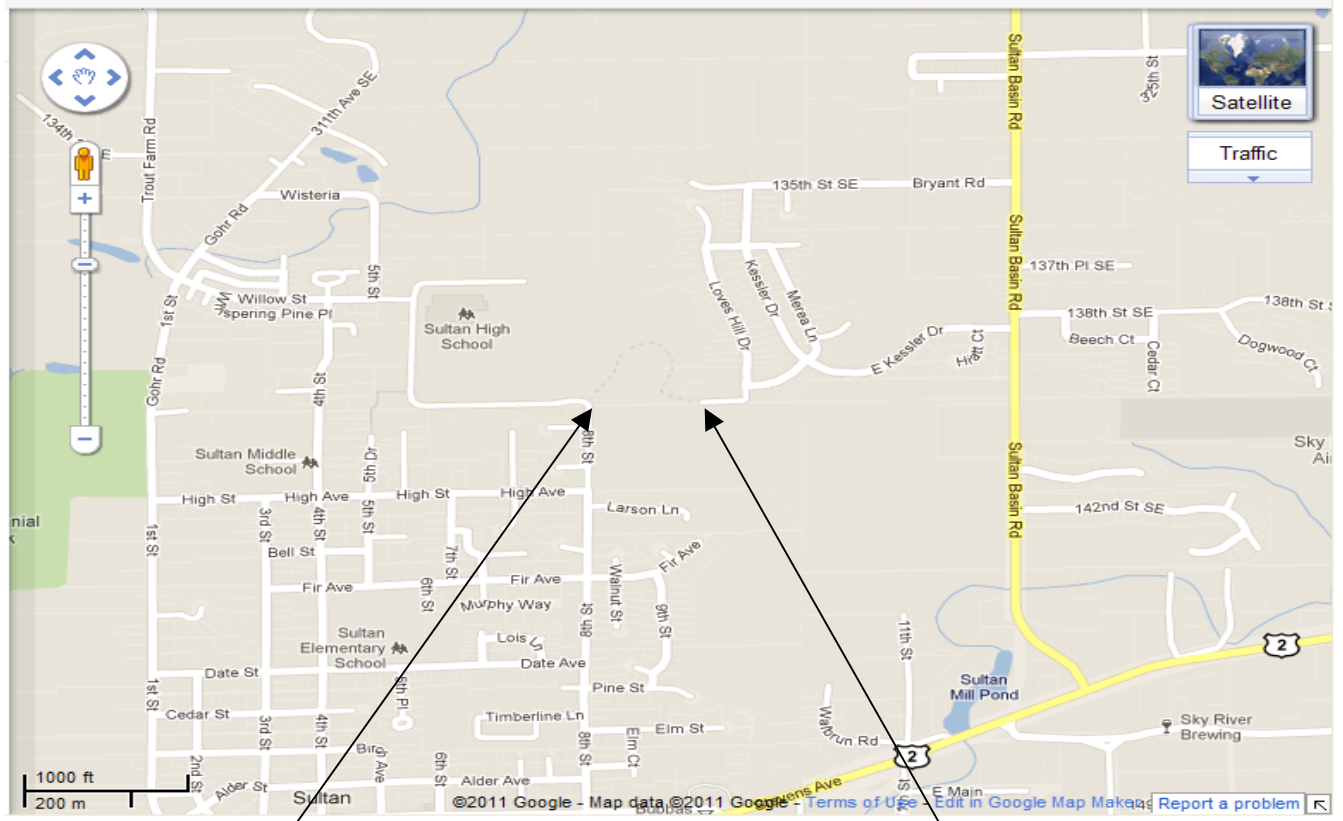


Sultan Evacuation Trail



Bottom of Evacuation Trail, at the North end of 8th Street, High School parking lot

Top of Evacuation Trail, at Love's Hill Drive

Sultan's Emergency Evacuation Trail is a dirt and gravel trail which is maintained by the city and is a pedestrian only trail. It extends from the north end of 8th Street, next to the Sultan High School parking lot entrance up to the end of Love's Hill Drive.

Sultan School District, police, fire and the city of Sultan practice school evacuations from our schools, up the trail every year.