

MURPHY ADDITION
VOL. 21, PG. 27

5

6

8

9

N 00°11'43" WCD
N 00°11'38" WCC
33.82'

TYPE 3 BARRICADE

N 87°29'47" ECD

N 87°29'52" ECC

616.57'

347.00'(CD)

N 00°11'38" W

282.34'(CC)
282.33'(CD)

N 00°11'38" WCC
N 00°11'43" WCD

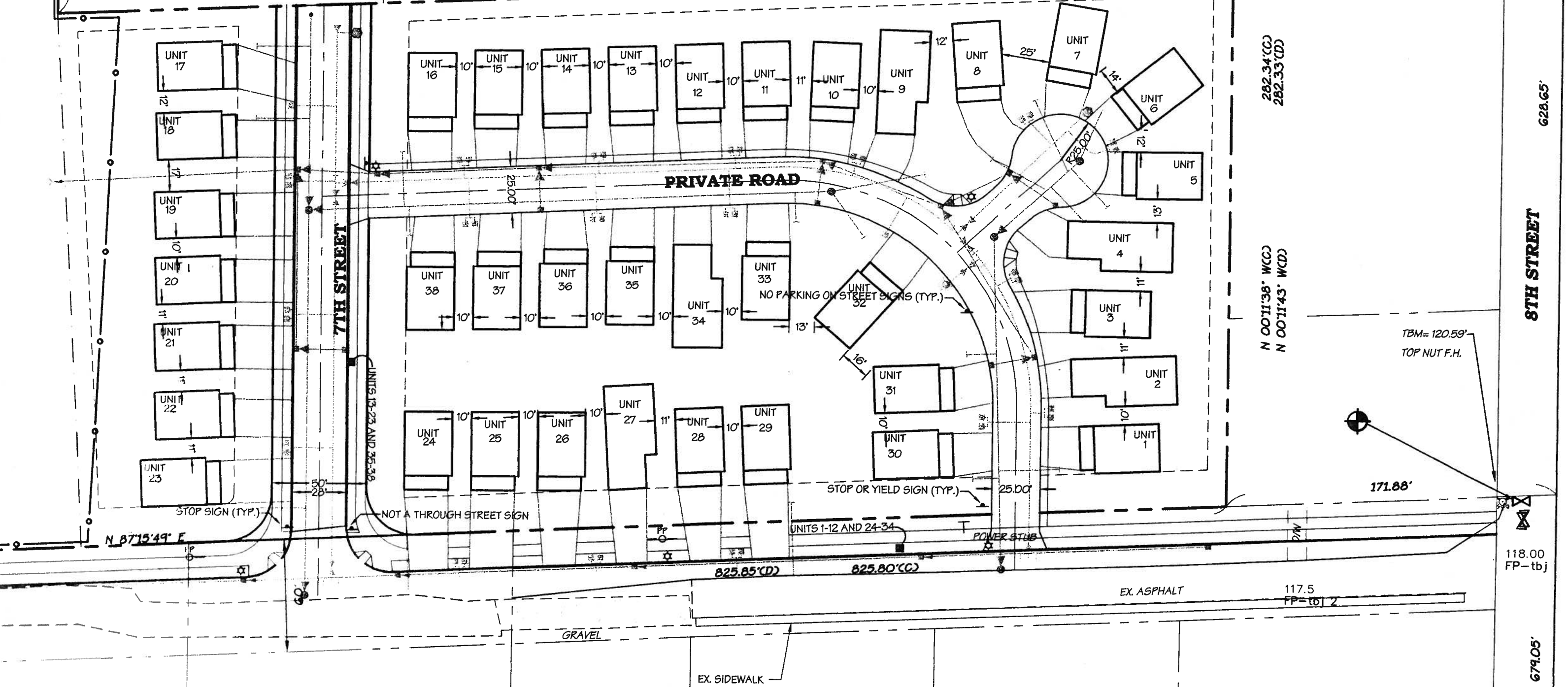
628.65'

8TH STREET

1307.70'

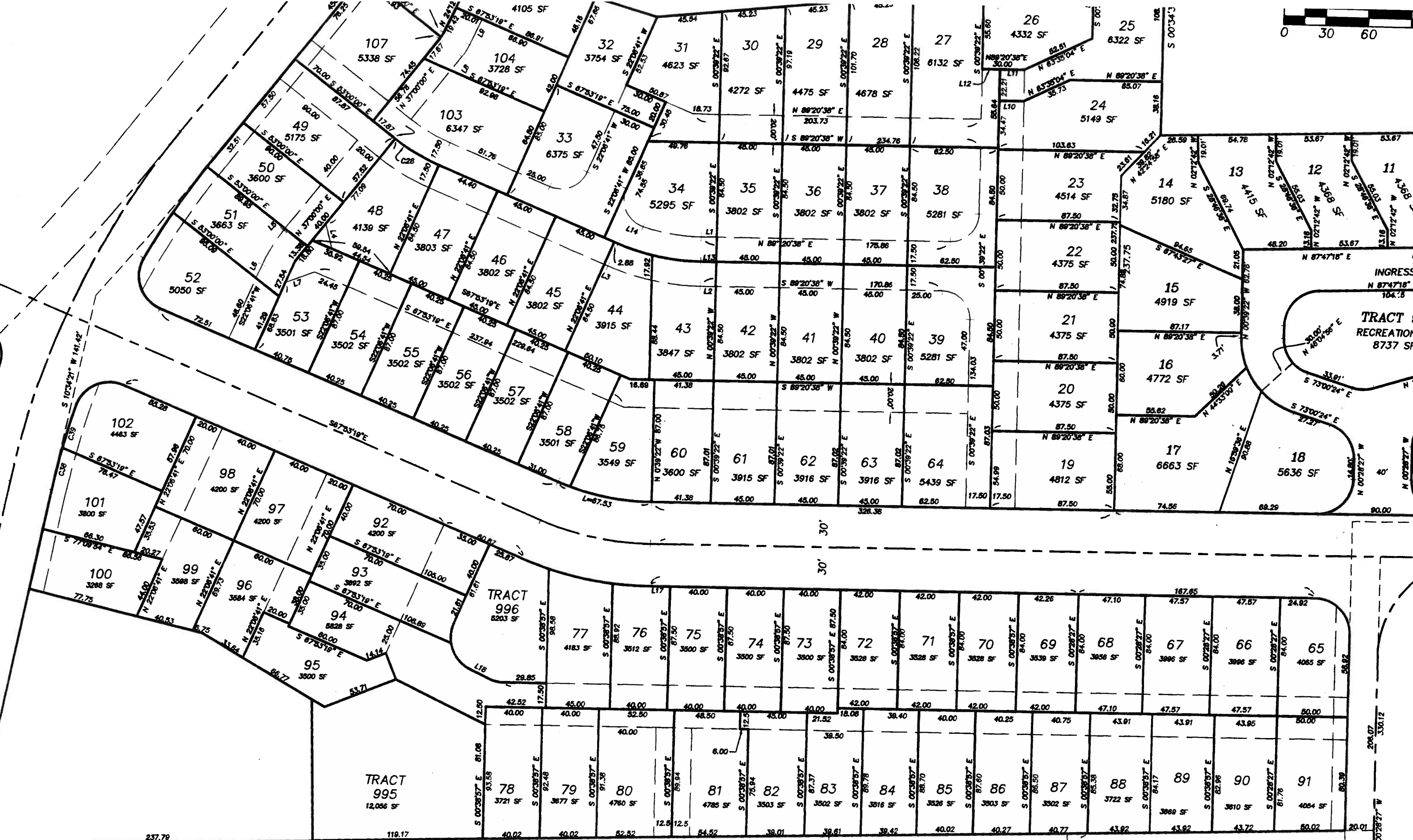
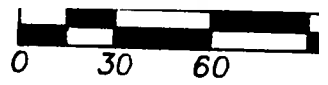
118.00
FP-tbj

674.05'

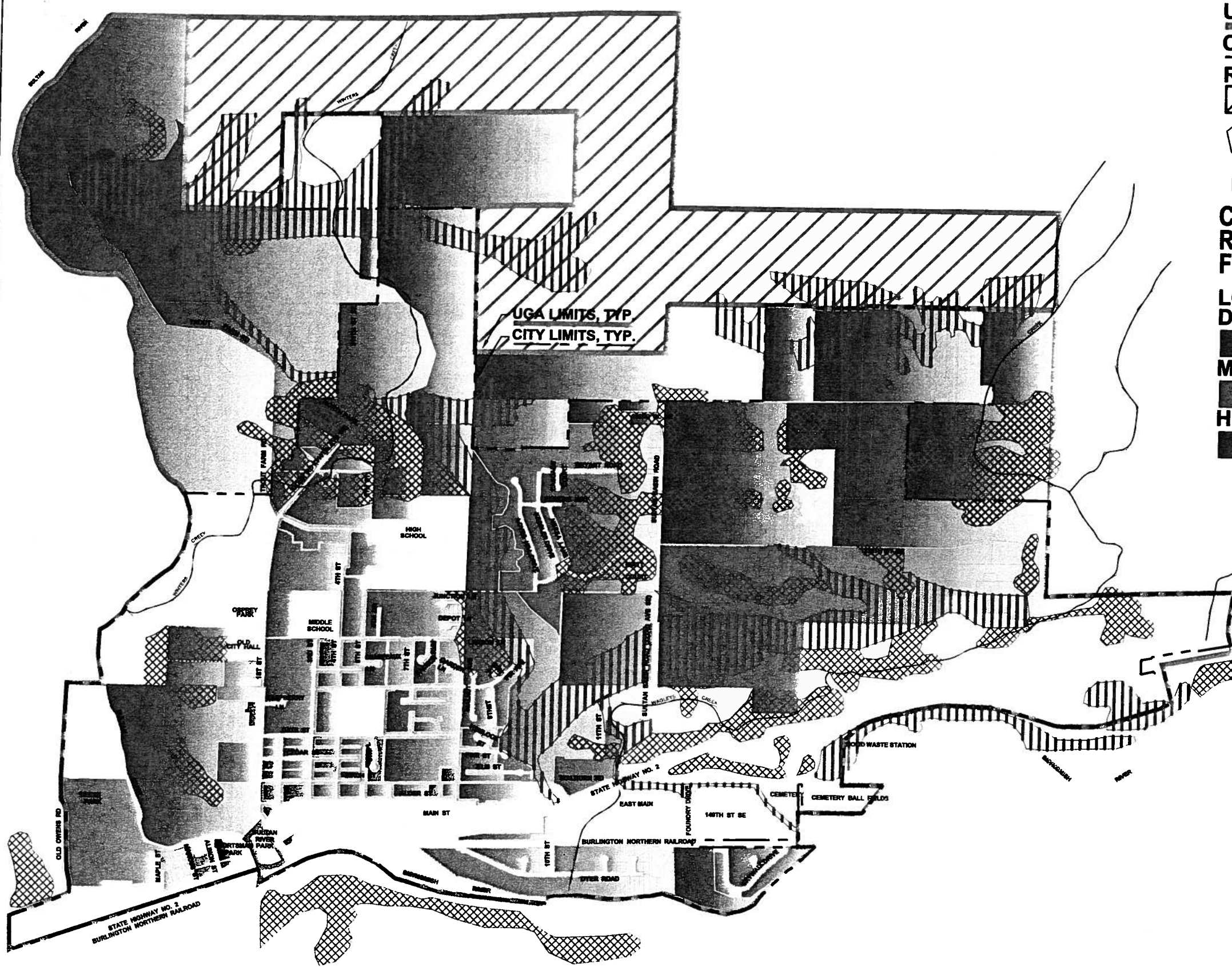


A.F. NO. 9510055005

Attachment B-1



Attachment B.2



LEGEND
 UGA LIMITS, TYP.
 CITY LIMITS, TYP.

RUTA



STEEP SLOPES

WETLANDS

**CITY OF SULTAN
 RESIDENTIAL ZONING AND
 FUTURE LAND USE**

LOW TO MODERATE
 DENSITY (LMD)



MODERATE DENSITY (MD)



HIGH DENSITY (HD)



BASE & UTILITY INFORMATION
 PROVIDED COURTESY OF:



BHC Consultants, LLC
 720 Third Avenue, Suite 1200
 Seattle, WA 98104
 Office: (206) 505-3400
 Fax: (206) 505-3406

This map is a geographic representation based on information available. It does not represent survey data. No warranty is made concerning the accuracy, currency or completeness of data depicted on this map. Parcel boundaries obtained from Snohomish County Assessor, January 2006. Critical Areas are approximate and based upon the 2007 Buildable Lands Report prepared by Snohomish County Planning & Development Services—Long Range Planning.

DRAWING INFORMATION HAS
 BEEN COMPILED BY:



SHOCKEY BRENT, INC.
 2716 Colby Avenue
 Everett, WA 98201
 Office: (425) 258-8308
 Fax: (425) 258-4448

PREPARED FOR EXPRESS USE BY:
 The CITY of SULTAN, WA



ISSUE DATE: 09.2008

FUTURE RESIDENTIAL LAND USE
 W/ CITY CRITICAL AREAS

CITY OF SULTAN
 SNOHOMISH COUNTY, WA

FIGURE 4

Attachment D